



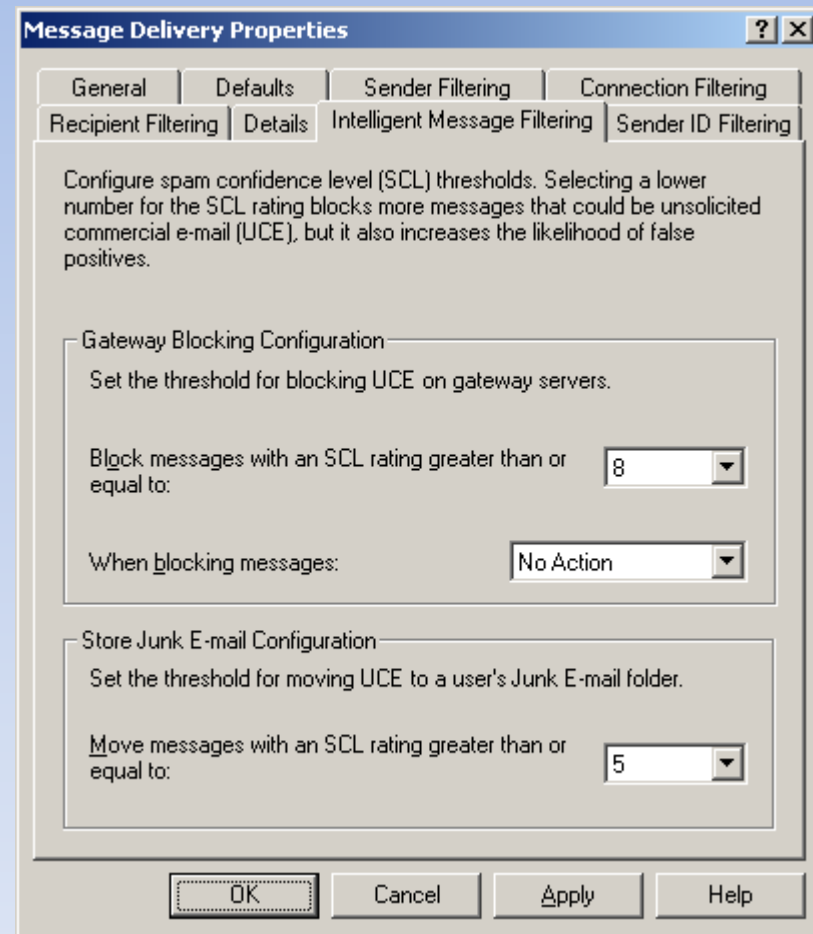
# IMF Tune v4 Quarantine – Reviewing & Resubmitting Archived Emails

# Agenda

- Quarantine System runs on Exchange 2003 or Exchange 2007
- IMF Tune archives and manages disk space through automatic compression, backup and deletion of old files.
- Tool: IMF Archive Manager  
<http://www.codeplex.com/imfam>
- Tool: IMF Companion  
<http://stoekenbroek.com/imfcompanion/default.htm>

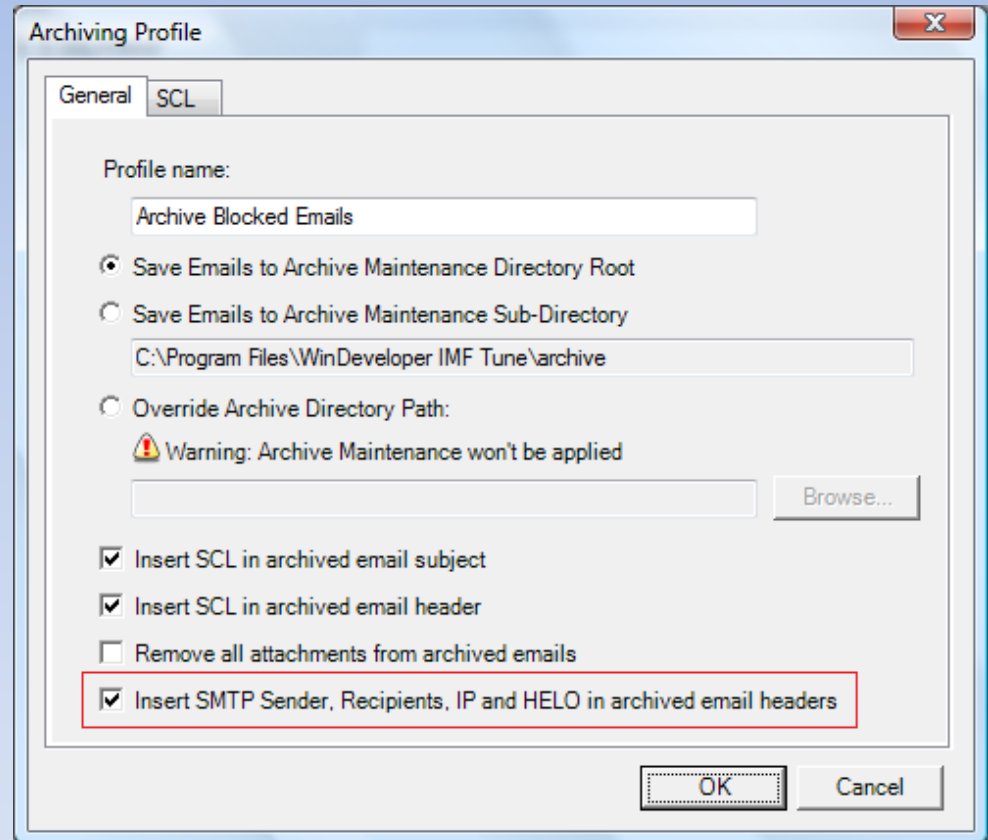
# Exchange 2003 IMF Settings

- Disable IMF Gateway Blocking at Exchange
- IMF Tune will perform any Gateway Blocking and Archiving operations



# IMF Tune Configuration

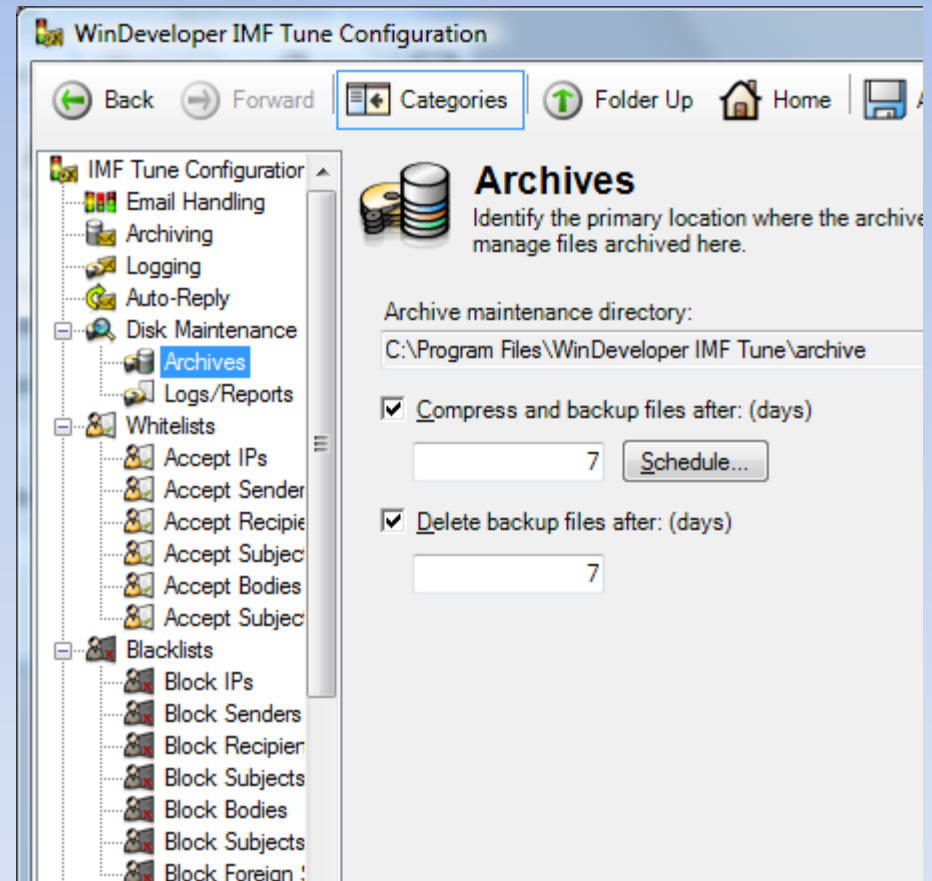
- IMF Tune allows archiving even in case of rejected emails.
- On configuring Archiving enable: 'Insert SMTP Sender, Recipients, IP and HELO to archived emails'.



# IMF Tune Configuration (contd.)

## Archive Maintenance

- Archive Maintenance limits disk consumption by compressing, backing-up and deleting old emails.
- Administrator focuses on emails archived in the last x days.

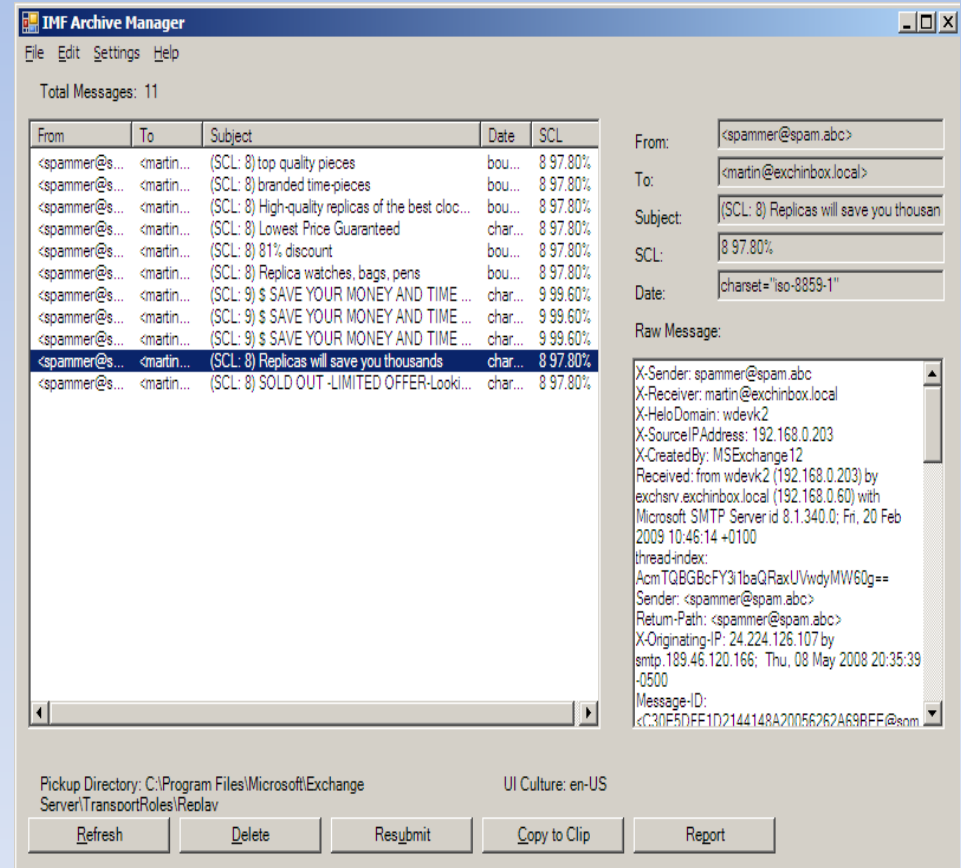


# Resubmit Email for Delivery

- In Exchange 2003, resubmit an archived emails by moving file to Pickup located at:  
<Exchange dir.>\Mailroot\vsi 1\Pickup
- IMF Archive Manager and IMF Companion provide a UI for reviewing and resubmitting emails.
- Both tools require us to configure the path to the IMF Tune Archive directory and Pickup.

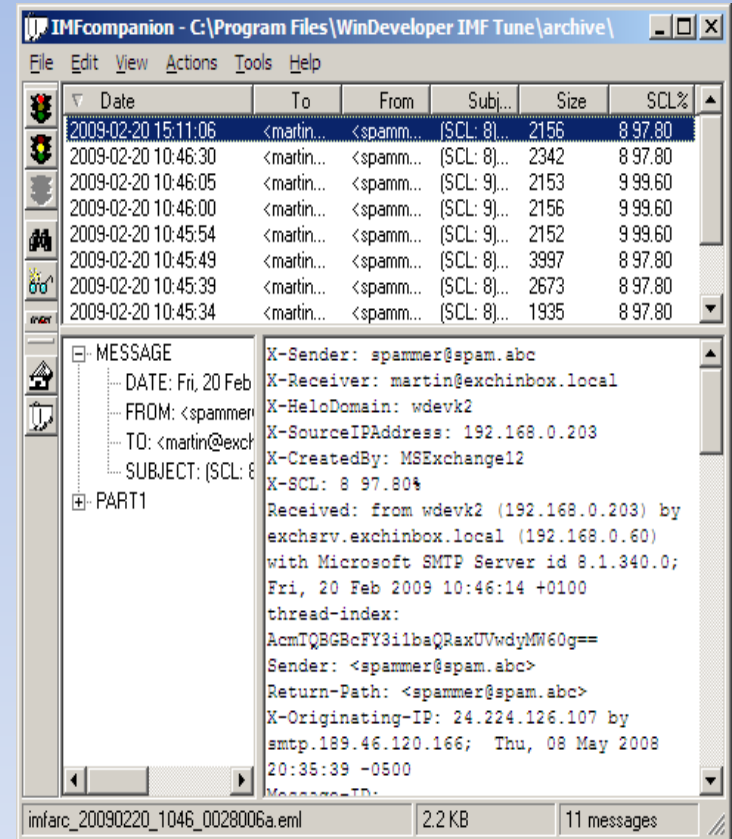
# IMF Archive Manager

- Open Source project hosted at Codeplex <http://www.codeplex.com/imfam>
- Allows us to Re-Submit or Delete Permanently Emails
- Runs reasonably well with up to 40,000 archived emails.



# IMF Companion

- Free Archive Manager from stoekenbroek.com:  
<http://stoekenbroek.com/imfcompanion/default.htm>
- Better looking and more user friendly interface
- Less effective when handling a large number of emails
- Does not work with Exchange 2007/Windows 2008 User Access Control





# Archive Management in Exchange 2007

- IMF Tune can be installed on Exchange 2007 Hub or Edge Transport Server.
- Possible platforms Windows 2003 and Windows 2008 servers.
- All Exchange 2007 scenario combinations require the same configuration.
- Configuration is nearly identical to that in Exchange 2003 with some exceptions...

# Exchange 2007 Exceptions

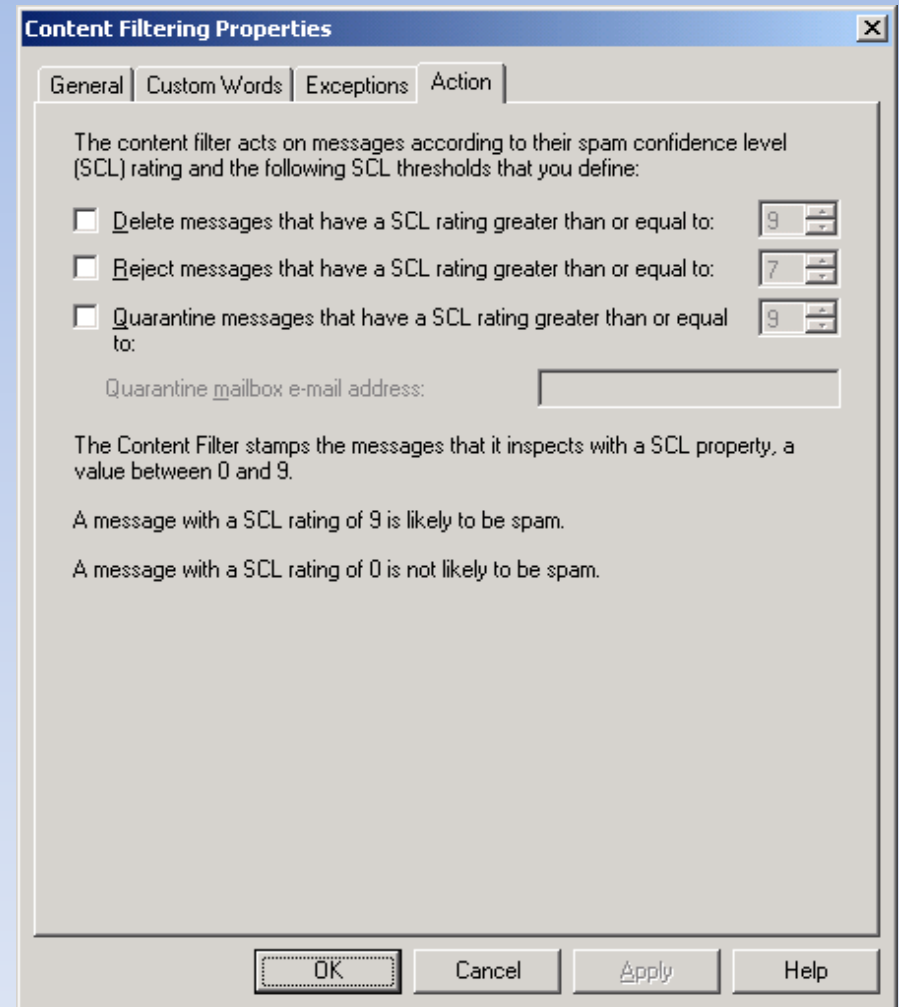
- In Exchange 2007 emails are resubmitted through the REPLAY folder and not the PICKUP folder:

<Exchange dir.>\TransportRoles\Replay

- Based on our testing on Windows 2008 in case User Account Control is enabled :
  - IMF Companion v1.15.6 does not work
  - IMF Archive Manager works only if using 'Run as Administrator' functionality

# Exchange 2007 Content Filter

- All of Quarantine, Delete and Reject actions should be disabled
- IMF Tune will perform any Gateway Blocking and Archiving operations



# Links

IMF Tune Homepage/Download:

<http://www.windeveloper.com/imftune/>

IMF Tune Video Tutorials:

<http://www.windeveloper.com/imftune/tutor/>

IMF Archive Manager

<http://www.codeplex.com/imfam>

IMF Companion

<http://stoekenbroek.com/imfcompanion/default.htm>

Sales/Licensing:

[sales@windeveloper.com](mailto:sales@windeveloper.com)

Technical Support:

[support@windeveloper.com](mailto:support@windeveloper.com)