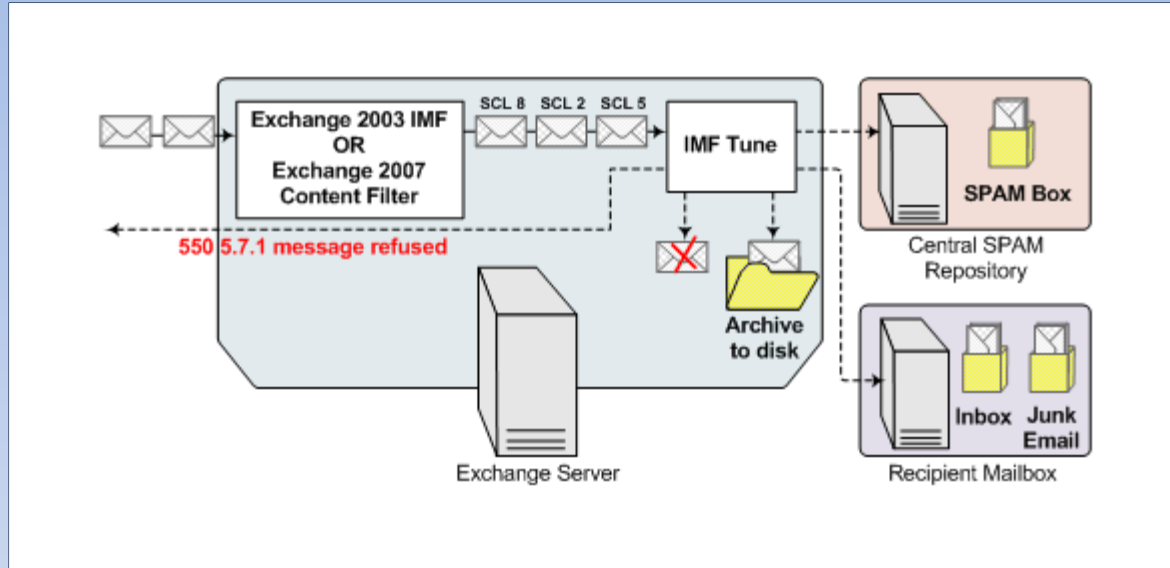




# Introduction to WinDeveloper IMF Tune v4.1

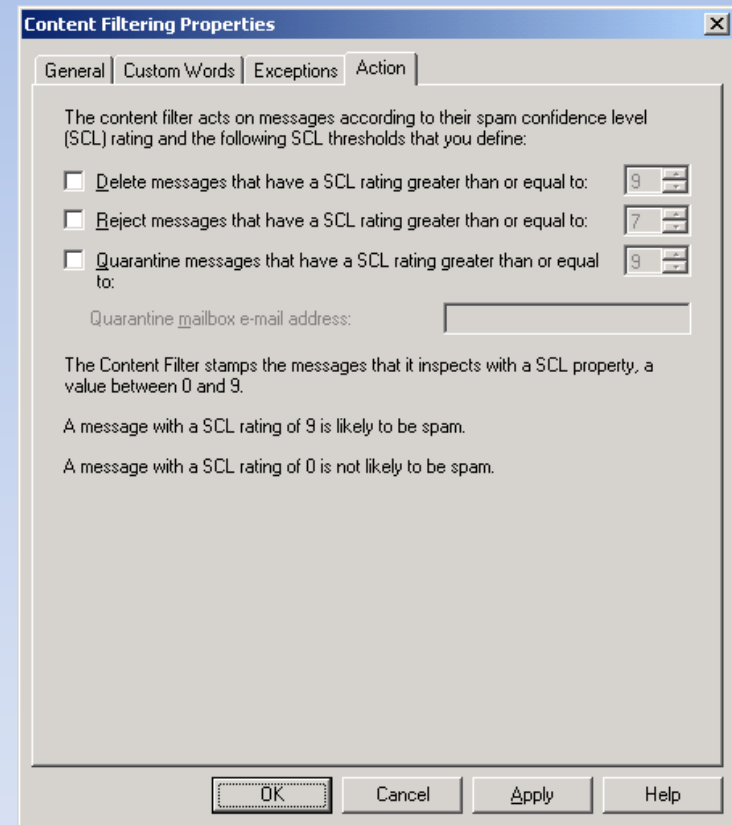
# What is IMF Tune?



An anti-spam product building on top of the Exchange 2003 Intelligent Message Filter (IMF)/Exchange 2007 Content Filter

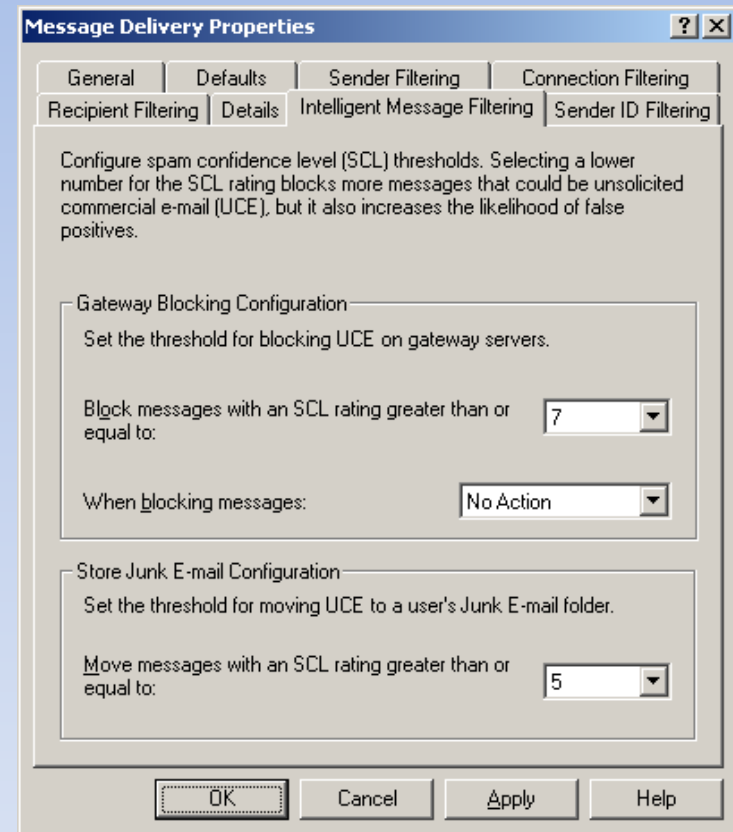
# Quick Look at Exchange 2007 Content Filter...

- Must be run on Edge or Hub Transport Server Role.
- Content Filter assigns initial SCL. IMF Tune updates this rating.
- Delete, Reject and Quarantine actions should be kept disabled. Perform gateway blocking at IMF Tune.



# ...and Exchange 2003 IMF

- Included with Exchange 2003 SP2.
- IMF assigns the initial SCL. IMF Tune updates this rating.
- Keep gateway blocking to No Action. Perform gateway blocking at IMF Tune.



# IMF Tune Functionality

- Multiple Threshold Actions
- Email Disk Archiving
- CSV Log Reporting
- Auto-Replies
- Various White/Black Lists
- Simple, Advanced and External SCL Rules
- HTML Keyword Reporting
- Disk Maintenance

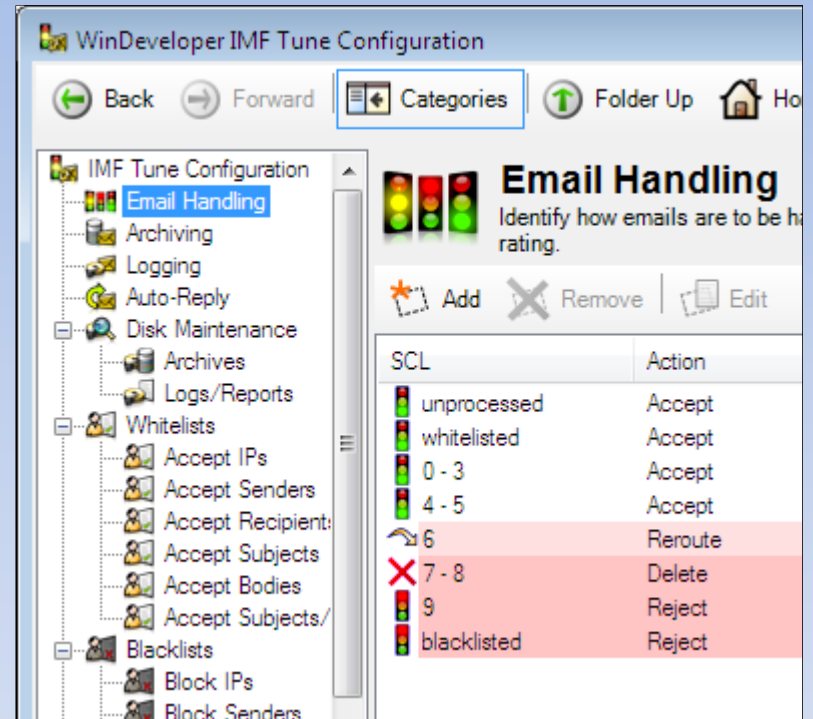
# Multiple Threshold Actions

Setup any number of threshold actions to identify how emails are to be handled.

Threshold range includes SCL 0 to 9, Whitelisted, Blacklisted and Unprocessed levels.

Actions:

- Moving emails to Junk Folder
- Quarantine to Central Mailbox
- Deletion
- Email Rejection



# Multiple Threshold Actions (contd.)

A selection of additional email modifications:

- ✓ Insertion of SCL in Subject/X-SCL header
- ✓ Attachment Stripping
- ✓ Insertion of Email information in Custom Headers

# Email Disk Archiving

- No matter how emails are handled a copy can be saved to the disk Archive
- Even Rejected Emails may be Archived!
- Break archives by SCL ranges
- Automatic backup and deletion of old emails through Disk Maintenance
- Resubmit Emails through Exchange 2003 Pickup/Exchange 2007 Replay directories



# CSV Log Reporting

- Record key information on processed emails including email addresses, subject, IP, SCL and applied action
- Standard CSV format for easy import to MS Excel and MS Access
- Break logs by date, file size and SCL ranges
- Automatic backup and deletion of old logs through Disk Maintenance

# White/Black Lists

- White/Black lists for IP, Sender, Recipient, Subject and Body
- Language (character set) based blacklist
- Sender and Recipient lists support the \* wildcard: [\\*@windeveloper.com](#), [\\*@\\*.ru](#)
- Subject and Body lists support AND, OR, NOT operators and double quotes

# Filtering Rules

- Test all kind of email characteristics to selectively identify spam and legitimate emails
- Three Rule types: Simple, Advanced and External
- Rule Actions: Whitelist, Blacklist, Set SCL to any value, Increment/Decrement current SCL rating

# Simple Rules

- Composed of a condition/action pair
- Test conditions against standard/custom headers, IP, sender/recipient addresses and bodies
- Four possible matching operations:
  - ✓ Header value prefix
  - ✓ Header exact value
  - ✓ Keywords within header
  - ✓ Empty/Missing Headers

# External Rules

- Same as Simple Rules, but the values to be matched are retrieved from an external file
- Great for hosting external white/black lists
- Using shared drives, the file can be read from multiple IMF Tune installations
- Possibility to integrate external sources of information (a script reading addresses from Active Directory)

# Advanced Rules

- Combine a number of conditions and exceptions to be satisfied into one rule.
- Each condition/exception tests one piece of information (header, email addresses, etc.)
- All Conditions **MUST** match, but Exceptions **MUST NOT** match for the Action to be applied.
- Possibility to test email properties not available in IMF Tune from anywhere else.

# Advanced Rules (Condition Types)

- Filter foreign spam by character set
- Block empty bodied PDF/Image spam
- Filter emails by attachment name, extension or MIME content type
- Filter by SMTP protocol data: IP, EHLO, MAIL FROM, RCPT TO
- Match Custom Headers to integrated other spam filters

# HTML Keyword Reporting

- See exactly how emails are matching whitelists, blacklists and Rules
- Report shows what is configured at IMF Tune and how this matched an email
- Automatic backup and deletion of old reports through Disk Maintenance



# Disk Maintenance

- A process that controls the consumption of HDD resources
- Schedule for the backup of Archived Emails, CSV logs and HTML Keyword Reports
- Deletion of old Backup Files

# Links

IMF Tune Homepage/Download:

<http://www.windeveloper.com/imftune/>

IMF Tune Video Tutorials:

<http://www.windeveloper.com/imftune/tutor/>

Sales/Licensing:

[sales@windeveloper.com](mailto:sales@windeveloper.com)

Technical Support:

[support@windeveloper.com](mailto:support@windeveloper.com)